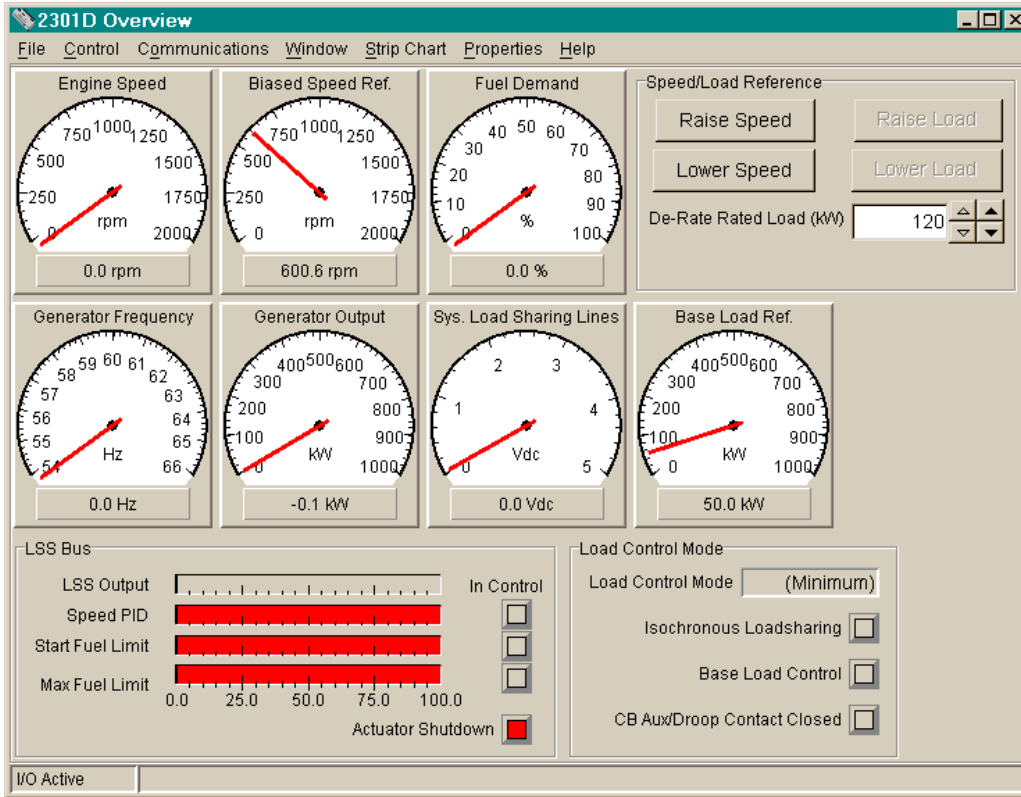


2301D Control View Standard 2301D Control View Professional



- 2301D Control View Standard and Professional allow continuous monitoring of the 2301D LSSC control from a PC
- 2301D Control View Professional also provides easy setup, troubleshooting, and fine tuning
- Intuitive Windows format
- Remote control capabilities with on-screen pushbuttons to raise or lower the speed or load references
- Includes gauges, bar graphs, buttons, and strip charting for monitoring major control functions

APPLICATIONS

2301D Control View Standard and 2301D Control View Professional are graphical PC programs developed for use with the 2301D LSSC control.

2301D Control View Standard is designed for users and operators to monitor the control. 2301D Control View Professional gives service technicians all the tools needed to configure, troubleshoot, and fine-tune the control for optimum operation.

Included are a number of windows—Overview, Speed, Load, I/O Status, Speed Dynamics, and Fuel Limiters—that are loaded with useful gauges, bar graphs, strip charts and buttons

that show everything going on with the engine-generator system. The windows even provide on-screen raise/lower pushbuttons for the speed and load references.

DESCRIPTION

2301D Control View software runs on a PC that is connected to the control system through a serial communications port. The operator workstation may be permanently connected to the control or may be connected only as needed. The communication server, ServLink I/O Server, is included with 2301D Control View.

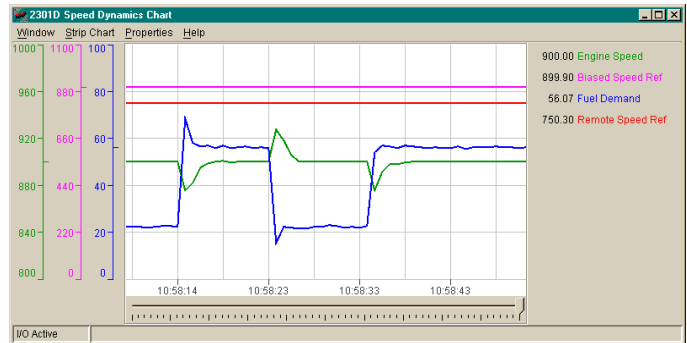
CONTROL VIEW WINDOWS

2301D Control View Standard and Professional supply a total of six windows:

- The **2301D Overview** window shown above appears when 2301D Control View is opened. This is the main operator window. Raise/lower speed and load reference pushbuttons are provided on this screen. A de-rate Rated Load adjustment is also included to allow operators to temporarily de-rate a troubled unit.
- The **2301D Speed Control** window displays the speed control mode, current dynamics, remote speed reference, speed settings, and speed rate settings.
- The **2301D Load Control** window displays the load control mode, load biases, load settings, load rate settings, remote load reference, and CB Open settings.
- The **2301D Hardware I/O State** window displays the state of all discrete inputs and outputs and the signal level of all analog inputs and outputs.
- The **2301D Speed Dynamics** window displays the dynamic settings of the speed control. An actuator bump function may be actuated to stimulate a speed controller dynamics response.
- The **2301D Fuel Limiters** window displays the fuel limiter settings and a bar graph display of the speed control PID output and fuel limiter outputs.

CONTROL VIEW CHARTS

Two pre-defined strip charts are also supplied and may be run from any of the 2301D Control View windows:



- The **Speed Dynamics Chart** (shown above).
- The **Load Dynamics Chart**

Minimum and Maximum values are user set to match unit speed and load ratings.

2301D CONTROL VIEW PROFESSIONAL

2301D Control View Professional enables the numerous input and setting values on each of the 2301D Control View windows, plus adds:

- A **Configuration Settings** window that allows easy configuration of the speed control, actuator, circuit breaker, and remote input functions.
- A **Speed 5-Point Gain Dynamics** window that allows configuration and fine-tuning of the 5-point control dynamics settings.
- An **Analog Inputs** window that allows configuration of the control's two analog inputs for remote speed reference, remote load reference, kW input, DSLC auxiliary, or other functions.
- An **Analog/Discrete Outputs** window that is used to configure the analog output, actuator output, and speed/load discrete output settings.
- And a **Force Relay and Analog Options** window used to enable and actuate the force output settings.

SPECIFICATIONS

Computer System Requirements

- The minimum system requirements are:
Pentium 133 MHz
64 MB of RAM memory
Windows® 95, 98, 2000, or Windows NT® 4.0
Minimum monitor resolution of 1024 x 768 pixels
- The recommended system requirements are:
Pentium 400 MHz
128 MB of RAM memory
Windows NT® 4.0

Use of a system that does not meet these requirements will likely degrade the performance. If this application is run on a machine that meets only the minimum requirements, it is best to run 2301D Control View with as few windows open as possible.



NOTE

If Control View is to communicate with a 2301D control for long periods of time, Windows NT should be used. Other versions of Windows may stop working and need to be restarted after several hours of continuous communications. Communications are more robust when using Windows NT.

Communications

2301D Control View Standard and Professional communicate with the control through an RS-232 serial cable to the 9-pin sub-D female connector on the control.

Download and Authorization Procedures

- 1) 2301D Control View Standard and 2301D Control View Professional software can be downloaded from the Woodward website (www.woodward.com). Select "Industrial," then "Product Lines," and then "Software." Select the software and start the download by "Run this program from its current location." (Alternatively, the software programs are available on a CD-ROM for a small fee.)
- 2) The downloaded software includes a free five-day trial period. To use the software beyond the trial period, please contact your local Woodward representative to purchase a software license.
- 3) Using the authorization code obtained with the purchased software license, follow the instructions for Software Authorization on the same website (Authorize Software License "Help").

Running 2301D Control View Standard and 2301D Control View Professional

By default, the program is launched by clicking Start, Programs, Woodward, 2301D Control View Standard 1.1 OR 2301D Control View Professional 1.0, 2301D Control View Standard OR 2301D Control View Professional. Once the program is installed, full on-line help is available within the program.



Woodward/
Industrial Controls
PO Box 1519
Fort Collins CO, USA
80522-1519
1000 East Drake Road
Fort Collins CO 80525
Ph: (1)(970) 482-5811
Fax: (1)(970) 498-3058

Distributors & Service
Woodward has an international network of distributors and service facilities. For your nearest representative call (1)(800) 835-5182 or see the Worldwide Directory on our web site.

Corporate Headquarters
Rockford IL, USA
Ph: (1)(815) 877-7441

www.woodward.com

This document is distributed for informational purposes only. It is not to be construed as creating or becoming part of any Woodward Governor Company contractual or warranty obligation unless expressly stated in a written sales contract.

**© Woodward Governor Company, 2001
All Rights Reserved**

01/01/F

For more information contact: