

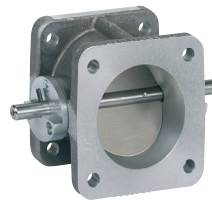
HEINZMANN®



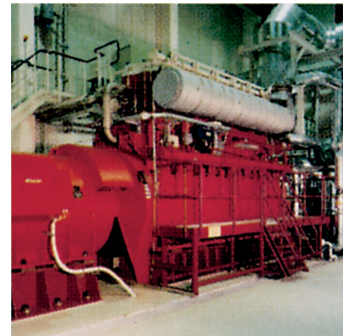
Leading in the electronic speed governor world

GAS ENGINE CONTROLS

Air Fuel Ratio
Controller



Load Sensor
or
 λ -Sensor
or
 CH_4



electronically controlled
main adjusting screw

gas mixer with
venturi insert

throttle valve

System Features

- enhanced carburation based system with electronic trim
- improved engine start and speed stability
- adjustable Air Fuel Ratio tracking curve
- automatic enrichment at cold start and temperature dependant leaning function
- applicable on an wide range of engine models without parameter set changes
- basic fuel system remains in operation with failure of power
- optional: closed loop control based on mixture strength sensor, oxygen sensor and/or load-input
- CAN communication
- DC-DESK menu driven programming

KRONOS 20

Electronic Air Fuel Ratio Control System

KRONOS 20

Electronic Air Fuel Ratio Control System

Based on the same venturi principle of the KRONOS 10, the KRONOS 20 provides an electronically controlled main adjusting screw, a digital control system and the necessary sensors.

Main feature of KRONOS 20 is the possibility to exactly set the values for the Air Fuel Ratio over the entire load and speed range. This results in clear advantages such as:

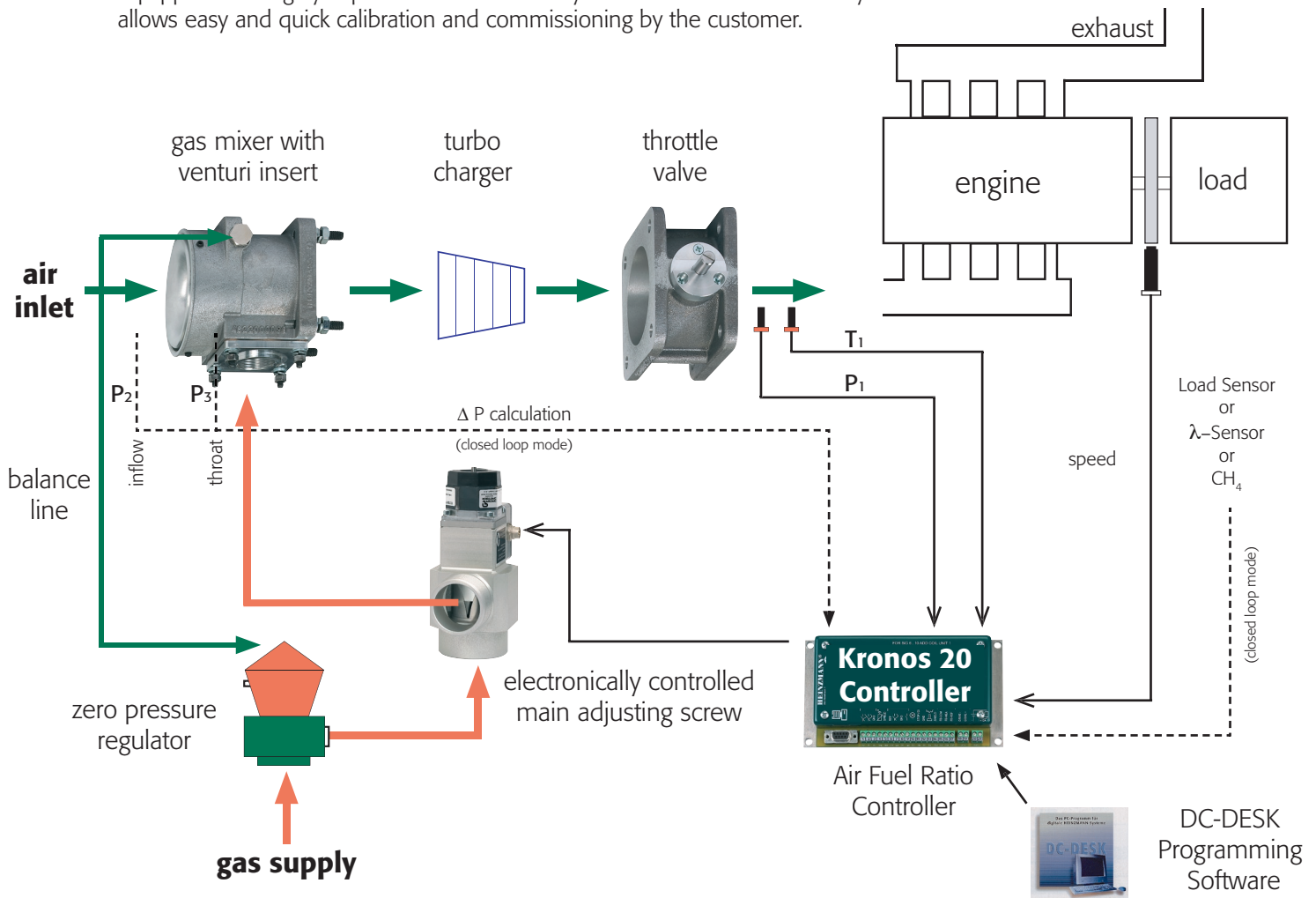
- excellent starting and synchronizing conditions of the engine
- meets emission regulations over the entire load and speed range

KRONOS 20 is a very powerful Air Fuel Ratio System at an affordable price.

Two versions of KRONOS 20 are available:

- open loop system configured for fuel and engine characteristics
- extended closed loop system with compensation for changing gas qualities

Equipped with highly sophisticated user friendly software the KRONOS 20 system allows easy and quick calibration and commissioning by the customer.



HEINZMANN®



© **Heinzmann GmbH & Co. KG Speed Governors**
 Am Haselbach 1 • D-79677 Schönau/Germany
 Phone +49-7673-8208-0 • Fax +49-7673-8208-188
www.heinzmann.com

